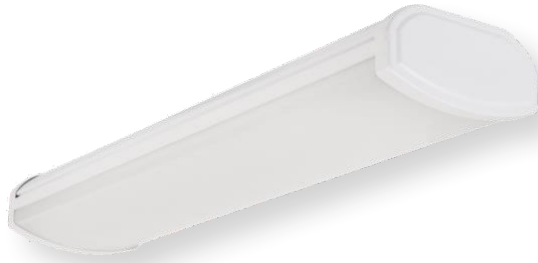


Wrap Lights

Wrap Lights for Commercial and Residential Applications



4' Wrap Light
34w 3600 LM
54676241

ETI ADVANTAGE

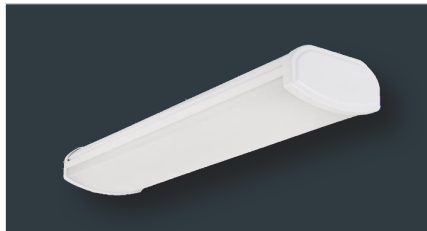


- ✓ Optional motion control, battery backup, and 0-10v dimmable
- ✓ High-impact resistant poly-carbonate Lens
- ✓ Patented Color Preference model available
- ✓ Multiple lumen packages

AVAILABLE MODELS

Features & Specifications

- Wide 110° beam angle • 120-277V/120V • >80CRI • 0-10V Dimmable • Temp rating -4°F-113°F
- L70 >50,000 • 5 year limited warranty • 4000K* [*except CP model]



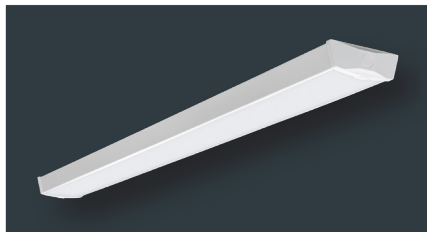
120-277V Commercial/Residential Wrap Lights

Base Model
4' Wrap 34W
3600 LM
4000K
54656241

2' Wrap 20W
1800 LM
4000K
54655441

Includes Motion Sensor
4' Wrap 34W
3600 LM
4000K, 54656241-I

Includes BBU
4' Wrap 34W
3600 LM
4000K
54656341



Includes Motion sensor & BBU
4' Wrap 34W
3600 LM
4000K, 54656341-I

High Lumen
4' Wrap 57W
5200 LM
4000K
54677441

Compact Wrap
4' Wrap 40W
3600 LM
4000K
56513141



120V Residential Wrap Lights

Wrap Light
40" 30W
2600 LM
30/40/5000K
56514142

4' Wrap with Motion Sensor
4' 40W
3600 LM
4000K, 54676142

Closet Light
18" Wrap 16W
1200 LM
4000K
53603142

PART NUMBER GUIDE

CATEGORY	SIZE	LUMENS	CRI/CCT	VOLTAGE	DIMMING	OPTION
VT				MV		

PRODUCT/SKU DETAILS

GENERAL SPECIFICATIONS:

Voltage	120-277VAC	Frequency	50/60 Hz.	CRI	80
Power Factor	>.90	THD	< 20%	Rating	cULus Wet
Temperature	-4°F to +113°F	Rated Life	50,000 hrs.	Warranty	5 Year Limited

ORDERING GUIDE

Part #	Model #	Description	Replaces	LED Watts	Lumens	LPW	CCT	Product Dimensions	CRI	Input Voltage	Case Pack
WR-4-36-940-MV-D	54676241	4' Wrap Light - 0-10V Dimmable	2 x 32w T8	34w	3,600	106	4000K	48 x 5.9 x 2.9 in.	90	120-277V	2
WR-4-36-940-MV-D-OS	54676241-I	4' Wrap with Step Dimming Motion Sensor	2 x 32w T8	34w	3,600	106	4000K	48 x 5.9 x 2.9 in.	90	120-277V	2
WR-4-36-940-MV-D-EM	54676341	4' Wrap with Battery Back-Up	2 x 32w T8	34w	3,600	106	4000K	48 x 5.9 x 2.9 in.	90	120-277V	2
WR-4-36-940-MV-D-EM-OS	54676341-I	4' Wrap with Battery Back-Up and Step Dimming Motion Sensor	2 x 32w T8	34w	3,600	106	4000K	48 x 5.9 x 2.9 in.	90	120-277V	2
WR-2-20-940-MV-D	54655441	2' Wrap Light - 0-10V Dimmable (ENERGY STAR®)	32w T8	20w	1,800	90	4000K	23.6 x 5.9 x 2.9 in.	90	120-277V	4
WR-4-57-940-MV-D	54677441	4' High Lumen Output Wrap Light - 0-10V Dimmable (ENERGY STAR®)	3 x 32w T8	57w	5,200	91	4000K	48 x 10 x 3.1 in.	90	120-277V	2
WR-4-36-840-MV	56513141	4' Compact Wrap Light (ENERGY STAR®)	2 x 32w T8	40w	3,600	90	4000K	48 x 5 x 1.8 in.	80	120-277V	6
WR-40-26-802-SV-D*	56507113	40" COLOR PREFERENCE® Wrap Light - Triac Dimmable (ENERGY STAR®)	2 x 32w T8	30w	2,600	87	30/40/5000K	39.9 x 4 x 2 in.	80	120V	2
WR-4-40-940-SV-N-OS*	54676142	4' Wrap Light with Motion Sensor (ENERGY STAR®)	2 x 32w T8	40w	3,600	90	4000K	48 x 5.9 x 2.9 in.	90	120V	2
CS-18-12-840-SV*	53603142	18" Closet Light with Pull Chain (ENERGY STAR®)	32w T8	16w	1,200	75	4000K	18 x 4.3 x 2 in.	80	120V	2

PACKAGING SPECIFICATIONS

Part #	Model #	UPC	UCC	Inner Carton Dimensions	Inner Carton Weight	Shipper/Master Carton Dimensions	Shipper/Master Carton Weight
WR-4-36-940-MV-D	54676241	849489005096	50849489005091	51.6 x 6.9 x 3.8 in.	6.8 lbs.	52.3 x 8.3 x 7.6 in.	13.98 lbs.
WR-4-36-940-MV-D-OS	54676241-I	849489005164	50849489005169	51.6 x 6.9 x 3.8 in.	6.8 lbs.	52.3 x 8.3 x 7.6 in.	13.98 lbs.
WR-4-36-940-MV-D-EM	54676341	849489009933	50849489009938	51.6 x 6.9 x 3.8 in.	10 lbs.	52.3 x 8.3 x 7.6 in.	21.2 lbs.
WR-4-36-940-MV-D-EM-OS	54676341-I	849489001968	50849489001963	51.6 x 6.9 x 3.8 in.	10 lbs.	52.3 x 8.3 x 7.6 in.	21.2 lbs.
WR-2-20-940-MV-D	54655441	849489009988	50849489002274	27.7 x 6.9 x 3.8 in.	4.2 lbs.	28.3 x 8.3 x 14.6 in.	16.7 lbs.
WR-4-57-940-MV-D	54677441	849489009995	50849489009990	49.4 x 11.4 x 4.65 in.	9.5 lbs.	50.0 x 10.0 x 12.1 in.	19.8 lbs.
WR-4-36-840-MV	56513141	849489003849	50849489003844	51.6 x 5.5 x 2.7 in.	4.5 lbs.	52.2 x 8.8 x 11.9 in.	28.3 lbs.
WR-40-26-802-SV-D	56507113	849489006925	50849489006920	42 x 4.9 x 3.1 in.	3.4 lbs.	42.5 x 6.8 x 5.6 in.	8.1 lbs.
WR-4-40-940-SV-N-OS	54676142	849489000817	50849489000812	51.6 x 6.9 x 3.8 in.	6.5 lbs.	52.3 x 8.3 x 7.6 in.	13.6 lbs.
CS-18-12-840-SV	53603142	849489007540	50849489007545	19.2 x 5.4 x 3.1 in.	1.7 lbs.	19.8 x 6.8 x 6.1 in.	4.03 lbs.