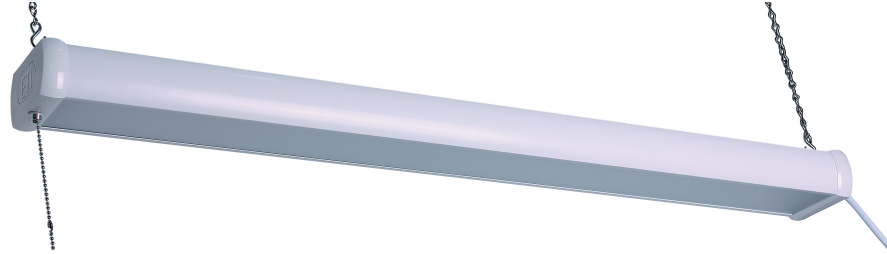




3' Slim Shop Light

3200 lms | 120 VAC | Model 54254142 | Part SH-3-42-840-SV

- > Energy Saving 42 Watt Integrated LED
- > Cool White 4000k CCT
- > Lasts 45 years* or 50,000 Hours Continuous Use
- > Maintenance Free — No Bulb Replacements
- > 5 Year Limited Warranty



SPECIFICATIONS

Model	54254142
Part	SH-3-42-840-SV
Description	3' Slim Shop Light
Input Voltage (VAC)	120
Wattage	42
Dimmability	NA
Average Rated Life¹	50,000 hours
Typical Lumens²	3200
CCT³	4000k
Location Rating	UL Damp
CRI⁴	80
Beam Angle	NA
Operating Temperature	Min -4°F (-20° C), Max 113°F (45° C)
Power Factor	>0.9
R9	15
DUV	-0.00076
CBCP	NA
Operating Frequency (Hz)	60

1 Hours lifetime with 70% lumen maintenance
 2 Thermally stable typical lumens (±10%)
 3 Thermally stable CCT (±10%)
 4 Color rendering index/Ra

TO ORDER:
www.ETiSSL.com
 Call: 1.855.ETi.SSLI
 1.855.384.7754

ETI

LED lighting facts
A Program of the U.S. DOE

Light Output (Lumens)	3200
Watts	42
Lumens per Watt (Efficacy)	76.19
Color Accuracy	
Color Rendering Index (CRI)	80
Light Color	
Correlated Color Temperature (CCT)	4000 (Bright White)

All results are according to IESNA LM-79-2008: Approved Method for the Electrical and Photometric Testing of Solid-State Lighting. The U.S. Department of Energy (DOE) verifies product test data and results.

Visit www.lightingfacts.com for the Label Reference Guide.

Registration Number: 5BAM-DSQOK4 (9/26/2017)
 Model Number: 542541###(##=41-50)
 Type: Luminaire - Linear





3' Slim Shop Light

3200 lms | 120 VAC | Model 54254142 | Part SH-3-42-840-SV

SHIPPING INFORMATION

Model	54254142
Part	SH-3-42-840-SV
UPC	849489001616
Product Dimensions (L x W x H in.)	35.98 x 4.02 x 2.99
Product Dimensions (L x W x H cm.)	91.4 x 10.2 x 7.6
Product Weight (lbs.)	2.93
Inner Carton Quantity	N/A
Inner Carton Bar Code	N/A
Inner Carton Dimensions (L x W x H in.)	N/A
Inner Carton Dimensions (L x W x H cm.)	N/A
Inner Carton Weight (lbs)	N/A
Master Carton Quantity	4
Master Carton Bar Code	50849489001611
Master Carton Dimensions (L x W x H in.)	41.34 x 8.58 x 10.86
Master Carton Dimensions (L x W x H cm.)	105 x 21.8 x 26.6
Master Carton Weight (lbs)	18.52
Pallet Quantity	96

This device complies with part 15 of the FCC Rules. Operation is subject to the following two conditions: (1) This device may not cause harmful interference, and (2) this device must accept any interference received, including interference that may cause undesired operation. For FCC Part 15 user information, Please see www.ETiSSL.com/fcc15b

TO ORDER:
www.ETiSSL.com
Call: 1.855.ETi.SSLI
1.855.384.7754

ETi Solid State Lighting, Inc.
720 Corporate Woods Parkway
Vernon Hills, IL 60061
Phone: 855.384.7754
Fax: 847.383.6256