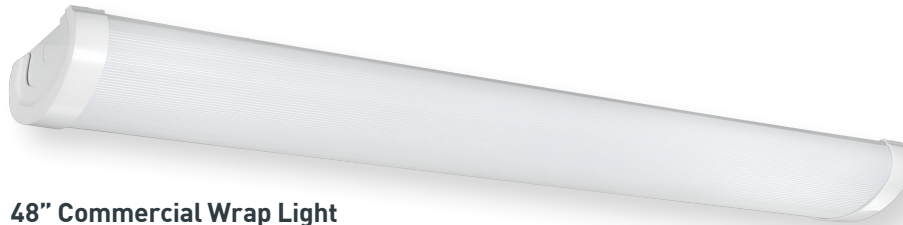


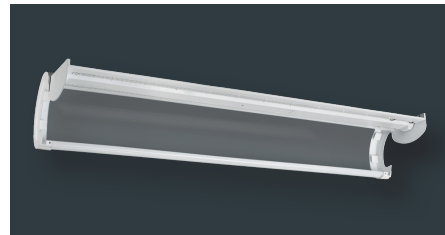
# Commercial Wrap Light

# The Easy-to-Install Wrap Light

# EZ WRAP INSTALL LIGHT



48" Commercial Wrap Light  
Part #: WR-4-43-840-MV-D  
Order #: 56514142 39W, 4300 LM, >80 CRI



- ✓ Commercial grade white powder coat finish
- ✓ Captive, hinged lens makes overhead installations a breeze!
- ✓ Snap-in quick connect wire junctions



## ETI ADVANTAGE



- ✓ Quick and easy installation
- ✓ Tandem/end-to-end connect up to 10 fixtures
- ✓ High impact resistant non-yellowing polycarbonate lens
- ✓ Accepts 0-10V step dimming control

### LIGHTING CONTROL AND SAFETY



70112202 • 25w Emergency LED Driver/BBU



90600145 • Motion Sensor with daylight sensor

## Perfect for Commercial, Industrial or Residential Application

### Design

- 180° glare free illumination!
- Hinged lens and snap-in, quick connect wiring allow for quick, easy, and safe installations!

### Technology

- Integrated driver is 0-10V dimmable to 10%

### Construction

- Shatter resistant polycarbonate thermoplastic lens
- Commercial grade powder coated white finish
- Temp rating -4°F - 113°F
- Dimensions: 48 x 7.4 x 2.7"

# Commercial Wrap Light

Project:   
Part Number:

## PART NUMBER GUIDE

CATEGORY	SIZE	WATTS	CRI/CCT	VOLTAGE	DIMMABILITY
WR	4	43	840	MV	D

## PRODUCT/SKU DETAILS

### GENERAL SPECIFICATIONS:

Voltage	120-277VAC	Frequency	50/60 Hz.	CRI	80
Power Factor	>.90	THD	< 20%	Rating	cULus Damp
Temperature	-4°F to +113°F	Rated Life	50,000 hrs.	Warranty	5 Year Limited

## ORDERING GUIDE

Part #	Model #	Description	LED Watts	Lumens	LPW	CCT	Replaces	Product Dim.	CRI	Input Voltage	Case Pack
WR-4-43-840-MV-D	56514142	4' Commercial Wrap Light - 0-10V Dimmable	39w	4,300	110	4000K	3 x 32w T8	48 x 7.4 x 2.7 in.	80	120-277V	2
<b>Accessories</b>											
EMA25FY-170	70112202	Emergency LED Driver/BBU - Compatible with 54655441, 54656241	25w	N/A	N/A	N/A	N/A	12.4 x 2.3 x 1.5 in.	N/A	100-347V	10
MC601V	90600144	Step Dimming Motion Sensor, Internal - Compatible with 54676241, 54676341	N/A	N/A	N/A	N/A	N/A	4.0 x 2.1 in.	N/A	120-277V	4
MC603S	90600145	Motion Sensor (Internal, compatible with all Wrap Lights)	N/A	N/A	N/A	N/A	N/A	3.5 x 1.4 in.	N/A	120-277V	4

## PACKAGING SPECIFICATIONS

Part #	Model #	UPC	UCC	Inner Carton Dimensions	Inner Carton Weight	Shipper/Master Carton Dimensions	Shipper/Master Carton Weight
WR-4-43-840-MV-D	56514142	849489060897	50849489060892	50.4 x 10 x 5.6 in.	9.6 lbs.	50.9 x 11.9 x 10.5 in.	20.8 lbs.
<b>Accessories</b>							
EMA25FY-170	70112202	849489064475	50849489064470	15.8 x 5.4 x 1.9 in.	2.6 lbs.	16.5 x 11.4 x 10.2 in.	26.8 lbs.
MC601V	90600144	849489009742	50849489009747	6.4 x 6.4 x 6.4 in.	1.1 lbs.	21.1 x 12.8 x 5.6 in.	18.7 lbs.
MC603S	90600145	849489009759	50849489009754	6.1 x 3.8 x 2.2 in.	0.9 lbs.	19.1 x 12 x 4.5 in.	14.6 lbs.