

DATE:	PROJECT:
TYPE:	NOTES:
CATALOG #:	

VFLS | SMALL VERSAFLOOD

WITH INTEGRATED PHOTOCELL

3 Lumen Boost® | 3 CCT Color Preference®

KEY FEATURES

ETI SSL's high-lumen VersaFlood small luminaires add versatility and convenience to outdoor projects. With integrated photocell, they are ideal for parameter lighting security. The VersaFlood includes include 3 Selectable Wattages X 3 Selectable CCTs X 2 Mounting Options—It's like getting 18 lights in one!

CCT & Light Quality

- 3 Selectable CCTs (3000K, 4000K, 5000K)
- 80+ CRI

Light Output & Efficacy

- **Lumen Package 1:** Single 2000 lm (15W)
- 5 Lumen Packages with 3 Lumen Boost Levels:
 - Lumen Package 2:** 1900 – 4900 lm (15 | 25 | 35W)
 - Lumen Package 3:** 4500 – 8400 lm (30 | 45 | 60W)
 - Lumen Package 4:** 5900 – 11200 lm (45 | 60 | 80W)
 - Lumen Package 5:** 10500 – 16800 lm (80 | 100 | 120W)
 - Lumen Package 6:** 13000 – 21750 lm (100 | 120 | 150W)
- Efficacy: 134 – 137 LPW

Dimming, Voltage, Controls

- Integrated 0-10V dimming
- Universal voltage (120–277V)
- Photocell w/ enable/disable standard

SPECIFICATIONS

Construction

- Corrosion resistant, rugged die-cast aluminum housing with bronze powder coat paint finish
- White powder coat paint finish available for smaller models
- Integrated heat sink maximizes product life and performance
- Sealed housing provides protection—wet location IP65

Optics

- NEMA 7Hx7V distribution
- 3 Selectable Lumen Packages from 5000 to 21000 Lumens at highest wattage
- High impact UV stabilized acrylic outer lens protects LEDs and allows for easy cleaning and debris removal

Electrical, Operating Temp.

- Universal 120-277 VAC input voltage.
- Both drivers have a power factor >90%, THD <20%
- Operating Temperature Range: -30°C (-22°F) / 50°C (122°F)

Warranty

- Five-year limited warranty

KEY DATA	
Delivered Lumen Range	1992 – 22789
Wattage Range	15 – 153
Efficacy Range (LPW)	127 – 164
Reported Life (Hours)	L70 / >54000



Lumen Pkg.
Sizes 1, 2, 3 & 4 come pre-installed with threaded knuckle mount



Lumen Pkg.
Sizes 5 & 6 come pre-installed with slipfit knuckle mount

Two Mounting Options Included:



Pre-Installed Slipfit Knuckle Mount or Threaded Knuckle Mount



Trunnion Mount



Certifications & Test Data

- UL/cUL listed and built for wet location
- IP65 Rated
- DesignLights Consortium™ Qualified and classified for DLC Standard (all lumen packages), refer to www.designlights.org for details
- Estimated >54,000 hours LED lifespan based on IES LM-80 results and TM-21 calculations



VersaFlood Small LED Flood WITH INTEGRATED PHOTOCELL | 3 LUMEN BOOST® | 3 CCT COLOR PREFERENCE®

ORDERING GUIDE

VFLS			CP3	MV	LVD		MM
Series	Lumens (Lumen Package) ¹	Lumen Boost	CCT	Voltage	Dimming	Finish Color	Mounting
VFLS VersaFlood Small	1 2000 lm	(Leave Blank) Lumen Pkg #1: 15W LB3 3 Lumen Boost®	CP3 3 CCT Color Preference® 3/4/5000K	MV Multi-Volt 120-277V	LVD Low Voltage Dimming 0-10V	(Leave Blank) Bronze WH White ²	MM Multi-Mount (knuckle & trunnion mount in carton)
	2 1900 – 4900 lm	Lumen Pkg #2: 15 25 35W					
	3 4500 – 8400 lm	Lumen Pkg #3: 30 45 60W					
	4 5900 – 11200 lm	Lumen Pkg #4: 45 60 80W					
	5 10500 – 16800 lm	Lumen Pkg #5: 80 100 120W					
	6 13000 – 21750 lm	Lumen Pkg #6: 100 120 150W					

Notes: 1. Lumen package gives nominal range. See below for delivered lumen data.
2. White available for Lumen Packages 1, 2 & 3 only

STOCK ORDERING INFORMATION

Catalog Part Number	Order Number	Description	CRI	CCT (CP3)	Wattage Level	Delivered Lumens ²	LPW	Volt.	Dim	DLC ³				
VFLS-1-CP3-MV-LVD-MM	60218101	VersaFlood, Small, Lumen Pkg 1 Bronze Finish	80+	3000K	15	1992	130	120-277V	0-10V	Premium				
				4000K	15	2184	149							
				5000K	15	2169	142							
VFLS-2-LB3-CP3-MV-LVD-MM	60219101	VersaFlood, Small, Lumen Pkg 2 Bronze Finish	80+	3000K	35	4334	127	120-277V	0-10V	Premium				
					25	3223	140							
					15	2428	147							
				4000K	35	4772	145							
				25	3455	155								
				15	2565	160								
VFLS-2-LB3-CP3-MV-LVD-WH-MM	60219102	VersaFlood, Small, Lumen Pkg 2 White Finish		5000K	35	4744	138							
					25	3415	149							
					15	2548	155							
VFLS-3-LB3-CP3-MV-LVD-MM	60220101	VersaFlood, Small, Lumen Pkg 3 Bronze Finish	80+	3000K	60	7698	130	120-277V	0-10V	Premium				
					45	6382	138							
					30	5199	145							
				4000K	60	8421	149							
				45	6382	138								
				30	5569	160								
VFLS-3-LB3-CP3-MV-LVD-WH-MM	60220102	VersaFlood, Small, Lumen Pkg 3 White Finish			5000K	60	8155				139			
						45	6769				148			
						30	5535				155			

Notes: 1. For more delivered lumens and test data on below, or visit ETISSL.com
2. Search Catalog Part Number for DLC



ETI Lighting
4873 Thurmon Tanner Parkway,
Flowery Branch, GA 30542

855.384.7754 | www.etissl.com
Quotes: quotes@etissl.com
Orders: etiororders@etissl.com

All specifications are subject to change without notice.
All reported values are typical values, measured under laboratory conditions @ 25° C (77° F).
Actual performance can vary slightly as a result of end-user application & environment.

VersaFlood Small LED Flood WITH INTEGRATED PHOTOCELL | 3 LUMEN BOOST® | 3 CCT COLOR PREFERENCE®

STOCK ORDERING INFORMATION

Catalog Part Number	Order Number	Description	CRI	CCT (CP3)	Wattage Level	Delivered Lumens ¹	LPW	Volt.	Dim	DLC ²
VFLS-4-LB3-CP3-MV-LVD-MM	60221101	VersaFlood, Small, Lumen Pkg 4 Bronze Finish	80+	3000K	80	10780	129	120-277V	0-10V	Premium
					60	8726	134			
					45	7135	141			
				4000K	80	11787	149			
					60	9720	156			
					45	7835	161			
				5000K	80	11440	140			
					60	9593	149			
					45	7824	156			
VFLS-5-LB3-CP3-MV-LVD-MM	60221201	VersaFlood, Small, Lumen Pkg 5 Bronze Finish	80+	3000K	120	16104	131	120-277V	0-10V	Premium
					100	14051	136			
					80	12095	146			
				4000K	120	17599	151			
					100	15371	155			
					80	12728	161			
				5000K	120	16957	140			
					100	14872	146			
					80	12537	154			
VFLS-6-LB3-CP3-MV-LVD-MM	60222101	VersaFlood, Small, Lumen Pkg 6 Bronze Finish	80+	3000K	150	20332	134	120-277V	0-10V	Premium
					120	17793	142			
					100	15792	148			
				4000K	150	22789	157			
					120	18778	160			
					100	16698	164			
				5000K	150	22480	147			
					120	18264	150			
					100	16434	156			

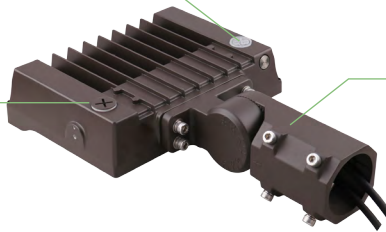
Notes: 1. For more delivered lumens and test data on below, or visit ETISSL.com
 2. Search Catalog Part Number for DLC

LUMINAIRE DETAILS

Photocell with cover plus enable/disable switch



Covered Access for CCT and Lumen Selection Switch



Pre-installed Slipfit Knuckle Mount (5 & 6 LM PKG)
Trunnion Mount Included



Pre-installed Threaded Knuckle Mount (1, 2, 3 & 4 LM PKG)
Trunnion Mount Included



ETI Lighting
4873 Thurmon Tanner Parkway,
Flowery Branch, GA 30542

855.384.7754 | www.etissl.com
Quotes: quotes@etissl.com
Orders: etiors@etissl.com

All specifications are subject to change without notice.
 All reported values are typical values, measured under laboratory conditions @ 25° C (77° F).
 Actual performance can vary slightly as a result of end-user application & environment.

MOUNTING OPTIONS

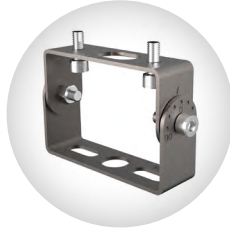


Lumen Package Sizes 5 & 6

Mounting Options:
(included in package)



Pre-Installed Slipfit
Knuckle Mount



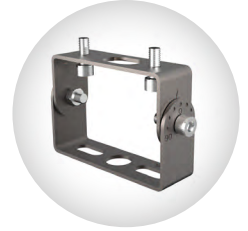
Trunnion Mount

Lumen Package Sizes 1, 2, 3 & 4

Mounting Options:
(included in package)



Pre-Installed Threaded
Knuckle Mount



Trunnion Mount

ACCESSORIES* (Order Separately, Field Install)

Catalog / Part #	Order #	Description
VFLS-WM-BZ	70340101	VersaFlood Wall Mount Kit
FL-JB-BZ	70539101	Flood Junction Box Cover Kit
FL-GS-BZ	70540101	Flood Ground Spike Stake

* Accessories for lumen package 1, 2, 3 & 4 only.
Not compatible with lumen packages 5 or 6.



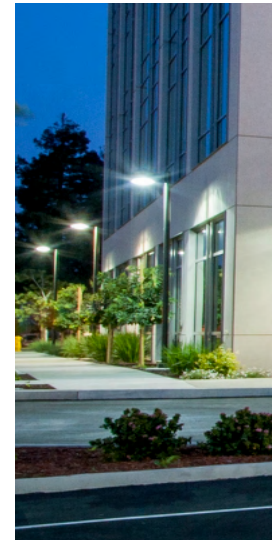
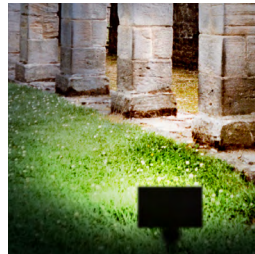
VersaFlood Wall
Mount Kit



Flood J-Box
Cover Kit

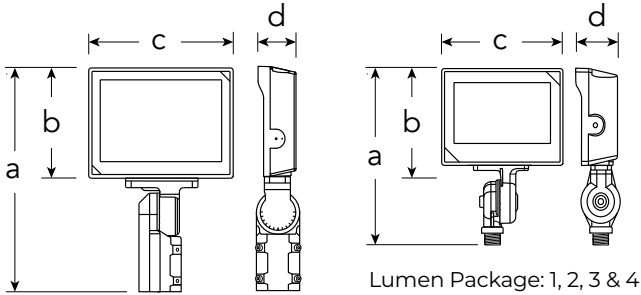


Flood Ground
Spike Stake



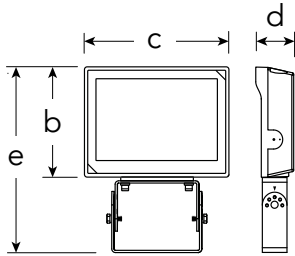
DIMENSIONS / DETAILS

Slipfit Knuckle and Treaded Knuckle Mounts



Lumen Package: 5 & 6

Trunnion Mount



Lumen Pkg.	a	b	c	d	Trunnion Height (e)	weight w/ knuckle	weight w/ trunnion	EPA
1	7.6"	4.2"	5.8"	2.0"	6.5"	2.2 lbs.	2.2 lbs.	0.18 ft ²
2	8.6"	5.2"	7.2"	2.2"	7.5"	2.73 lbs.	2.73 lbs.	0.27 ft ²
3	9.8"	6.4"	8.7"	2.2"	8.7"	3.7 lbs.	3.7 lbs.	0.42 ft ²
4	9.8"	6.4"	8.7"	2.2"	8.7"	3.7 lbs.	3.7 lbs.	0.42 ft ²
5	15.3"	7.5"	10.2"	2.7"	12.3"	8.8 lbs.	7.5 lbs.	0.6 ft ²
6	15.2"	8.3"	11.4"	2.9"	13.1"	10.6 lbs.	9.5 lbs.	0.6 ft ²

PERFORMANCE / Data

Lumen Maintenance

Ambient Temp.	TM-21 Lumen Maintenance (54,000 hours)
25° C (77° F)	87.15% - 89.15%
Ambient Temp.	TM-21 Theoretical L70 (hours)
25° C (77° F)	> 54,000

Load Information

Power Factor	≥0.9
THD	≤20%
Frequency	50/60 Hz
Operating Humidity	20% - 90% RH
Low Temp Start Max Temp	-30°C (-22°F) / 50°C (122°F)

DISTRIBUTION

