

ECOST | ECO STRIP LIGHTS

3 COLOR PREFERENCE®

KEY FEATURES

Each luminaire is equipped with easy end-to-end connection features, and have 3 field selectable color temperature options—3000K, 4000K and 5000K.

CCT & Light Quality

- Luminaire uses ETI's patented Color Preference® with 3 Selectable CCTs Standard (3000K, 4000K, 5000K)
- CRI 80+

Light Output & Efficacy

- High Lumen Output: 2': 1100 – 1174 lumens (2')
- 4': 1983 – 2101 lumens (4')

Dimming, Voltage

- TRIAC dimming | 120V

SPECIFICATIONS

Construction

- Formed steel housing
- Post painted with reflective paint for ease of handling

Optics

- Non-yellowing PC lens material provides high light transmittance
- Semi-diffused, frosted, 1 mm thick secondary polymer lens. provides a uniform and soft visual appearance when in direct view with minimal LED pixelation and reduces glare

Installation

- Suspension Kit and 5-ft. Power Cord with on/off Switch Included
- Plug-In or Direct Wire Capable
- Surface mounting kit accessory available (sold separately)
- Easy end-to-end connection capabilities:

End-to-End Connector Included
Linking cord accessory available (sold separately)

- 3CCT COLOR PREFERENCE® for easy field-adjustable CCT selection. Ships at 3000K.

Electrical

- > 170,000 hour LEDs at L70 for reduced maintenance
- Operates at 120V, 60 Hz | TRIAC dimming down to 10%
- -4°F to 113°F (-20°C to 45°C)
- TRIAC dimming, down to 10%*
- BBU field-installed accessories available

* Always consult dimmer manufacturer for proper use, installation and compatibility (some dimmers may require a neutral in the wall box).

Warranty

5-Year Standard Warranty. See terms at: ETISSL.com/warranty/

KEY DATA	
LUMEN RANGE	1100 – 2101
WATTAGE RANGE	8.7 – 17.2
EFFICACY (LPW)	118 – 135
REPORTED LIFE (HOURS)	L70 / > 170,000

DATE:	PROJECT:
TYPE:	NOTES:
CATALOG #:	



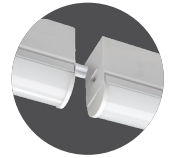
4' Strip



2' Strip



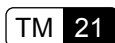
Easily Remove Lens to Access Color Temperature Switch



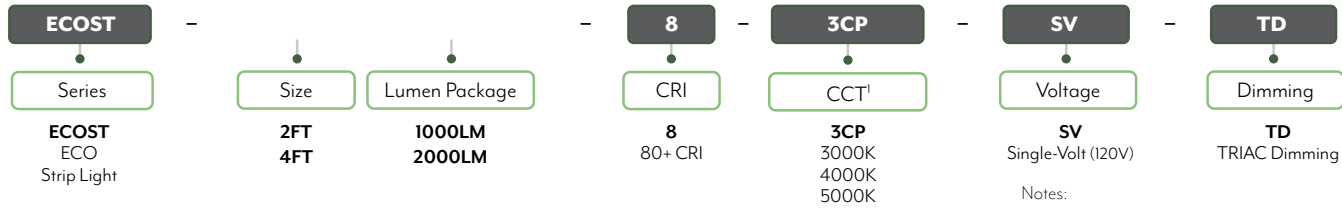
End-to-End Connector Included

Certifications & Test Data

- All luminaires are UL listed and are built for damp location use
- Adheres to LM79, and TM30 industry standards for photometric, lumen maintenance and lifetime calculations
- DLC® (DesignLights Consortium) Qualified. Please refer to DLC for specific product qualifications at www.designlights.org (See Page 4 for search info.)
- Driver rated for FCC part 15 Class B for use in residential or commercial applications
- Suitable for use in closets when installed in accordance to NEC Section 410.16 (A)(1) and 410.16 (C)(1)



CATALOG LOGIC



Notes:
1. Ships at lowest CCT Installing contractor responsible for ensuring desired CCT is selected during installation.


STOCK ORDERING INFORMATION

CATALOG PART NUMBER	ORDER NUMBER	DESCRIPTION	LINKABLE QTY	CASE QTY	CRI	CCT	WATTS (NOM.)	LUMEN PKG. ¹	DELIVERED LUMENS	LPW	VOLTAGE	DIM
ECOST-2FT-1000LM-8-3CP-SV-TD	556081110	2' ECO Strip	up to 30	4	80+	3000K	8.5	1000	1092	122	120V	TRIAC
						4000K	8.5	1000	1176	138		
						5000K	8.5	1000	1095	126		
ECOST-4FT-2000LM-8-3CP-SV-TD	556091110	4' ECO Strip	up to 15	6	80+	3000K	17	2000	2054	122	120V	TRIAC
						4000K	17	2000	2220	138		
						5000K	17	2000	2086	126		

Notes: 1. For more delivered lumens and test data see pages 3, or visit ETISSL.com 2. For DLC listing, search part number. Example: ECOST-4FT-2000LM-8-3CP-SV-TD


AVAILABLE STOCK ACCESSORIES (must be ordered separately, field installed)

Emergency LED Driver/BBU² Not compatible with Motion Sensor

ORDER NUMBER	DESCRIPTION	DETAILS
70112202-2 (EMA25FY-170)	Square Emergency LED Driver BBU 25W, IP rated, 90 min	 BBU certified in CA Title 20 MAEDBS. Search: EMA25FY-170 SPEC SHEET DOWNLOAD (located on ETISSL.com)



Notes: 1. Also compatible with: 70114402-2 (40W, IP rated, 90 minutes, Square)
2. BBUs CANNOT be used or installed with Motion Sensor. Luminaire can be used with either BBU or Sensor. It is not compatible with both.

Motion Sensor¹ Not compatible with Emergency LED Driver/BBU

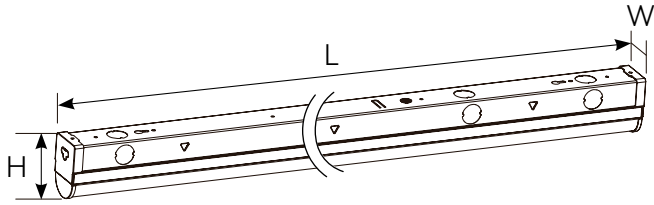
ORDER NUMBER	DESCRIPTION	DETAILS
90600121	Multi-Volt Occupancy Sensor with daylight sensor, (External)	 SPEC SHEET DOWNLOAD (located on ETISSL.com)

Notes: 1. Motion Sensor CANNOT be used or installed with BBUs. Luminaire can be used with either BBU or Sensor. It is not compatible with both.

Mounting Accessories²

ORDER NUMBER	DESCRIPTION	DETAILS
54657102	4" J-Box Surface Mounting Plate and Screws	 PRODUCT LISTING (located on ETISSL.com)
54242102	5' Linking Cable	 PRODUCT LISTING (located on ETISSL.com)

DIMENSIONS / DETAILS



Dimensions/Weights					
Model #	Description	L	W	H	weight (lbs)
556081110	2' Strip Light	24" (610 mm)	1.7" (44 mm)	2.6" (158 mm)	1.6
556091110	4' Strip Light	48" (1220 mm)	1.7" (44 mm)	2.6" (158 mm)	2.4



Easily Remove Lens to Access Color Temperature Switch (Ships at 3000K)

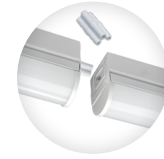


MOUNTING

Suspension Kit and 5-ft. Power Cord with on/off Switch Included



Linking Cable Accessory



End-to-End Connector Included

Surface Mount Plate Accessory



PERFORMANCE / Data

Lumen Maintenance

Ambient Temp.	TM-21 Lumen Maintenance (54,000 hours)
25° C (77° F)	> 89,58%
Ambient Temp.	TM-21 Theoretical L70 (hours)
25° C (77° F)	> 170,000

Load Information

Power Factor	0.90
THD	< 20%
Frequency	60 Hz
Sound Rating	< 20 Dba
Low Temp Start / Max Temp	-4°F to 113°F (-20°C to 45°C)

DIMMING LIST

DIMMER BRAND	DIMMER MODEL
TRIAC DIMMERS	
LUTRON	LECL-153
LUTRON	SCL-153P
LUTRON	NTCL-250
LUTRON	GT-15
LEVITON	DSL06-1LZ
LEVITON	RELO6
LEVITON	TSL06
LEVITON	RDL06
COOPER	9540
COOPER	9573
COOPER	DLC03P
COOPER	SUT7
COOPER	TAL06P2

* Always consult dimmer manufacturer for proper use, installation and compatibility (some dimmers may require a neutral in the wall box).

PHOTOMETRIC SAMPLES

2-Foot

Luminaire Data:

CCT & CRI	4000K, 80+ CRI
DELIVERED LUMENS	1176
WATTAGE	8.6
EFFICACY	137
SPACING	0° = 1.33 / 90° = 1.37

Photometric values based on tests performed in compliance with LM-63 & LM-79

Candela Plot

4-Foot

Luminaire Data:

CCT & CRI	4000K, 80+ CRI
DELIVERED LUMENS	2220
WATTAGE	16.1
EFFICACY	138
SPACING	0° = 1.33 / 90° = 1.37

Photometric values based on tests performed in compliance with LM-63 & LM-79

Candela Plot